



SEASON'S GREETINGS FROM FPCL

The team from Fiji Ports Corporation Pte Limited would like to say a warm thank-you to all of our employees, customers and stakeholders for your continuing support and inspiring work throughout the year. Much has been achieved!

While we look forward to a well-earned rest during the upcoming holiday season, celebrating and relaxing with family and friends, we can reflect on a year of continuing change and growth.

In 2022, the basis of our endeavors was shaped by our commitment to our stakeholders, facilities and services of Fiji Ports. Some of the major projects successfully implemented during the year included but not limited to Revenue Automation, Vessel Traffic Management System, Lautoka Yard 3 container upgrade, and others.

As we are approaching to the festive season, FPCL began to wrap up its work for the year and celebrate all its achievements, and one being for Port of Suva winning World Cruise Awards for 'Oceania's Best Cruise Terminal 2022, two years in a row now.

Another one was the opening of borders which saw an increase in cruise liners and vessels entering our shores again.

FPCL is ready to take on more plans, events, projects, and trainings.

Port of Suva wins World Cruise Award for 'Oceania Best cruise Terminal 2022'

The Port of Suva has done it again and won the award of Oceania's Best Cruise Terminal 2022 at the World Cruise Awards, two years in a row now.

The results for this year's winners followed a year-long search for the world's learning cruise brands. Votes were cast by cruise industry professionals and the public, with the nominee gaining the most votes in a category



named as the winner. The Port of Suva was up against the Port of New Castle (Australia), Port of Auckland (New Zealand), and Sydney Harbour (Australia). Fiji had also won Oceania's Best Cruise Destination 2022.

EVENTS

Port visit by JICA and OCDI delegation on a fact finding mission

The Ministry of Land, Infrastructure, Transport and Tourism of Japan has commissioned the Overseas Coastal Area Institute of Japan (OCDI) to conduct a project finding study in the Pacific Islands. As part of the study, the OCDI delegates together with the Japan International Cooperation Agency (JICA) Fiji office met with Fiji Ports and Fiji Ports Terminal Pte Limited to observe current operations and facilities in ports, discuss future project developments, new policy agenda such as Smart Port, Green Port, Carbon Neutral, and challenges on port management. As part of their visit, site visits to the Ports of Suva and Lautoka was facilitated by Fiji Ports.



Korean Navy Vessel returns to Fiji's shores

On 16th November 2022, the Port of Suva welcomed the ROK Navy Cruise Training Task Group (CTTG) for the first time in 19 years since 2003.



The Korean Navy vessel was greeted and welcomed by the Fiji Navy band, Fiji key personnel in the Korean embassy and Korean nationals living in Fiji. The CCTG plans to conduct various activities and aims to strengthen military ties and friendships with those living in Fiji.

AIDamar Cruises visits Fiji for the first time

As part of its 117 days cruise itinerary, themed as "New Year", AIDamar Cruise from Germany visited Ports of Suva and Lautoka for the first time on 23rd & 24th December 2022. The cruise vessel had approximately 1,600 tourists and 600 crew onboard. The cruise ship was welcomed and greeted by few of FPCL's staff.



Fiji Ports presents at the National Workshop on Sustainable Maritime and Port Connectivity for Resilient and Efficient Supply Chains

The National Workshop on Sustainable Maritime and Port Connectivity for Resilient and Efficient Supply took place in Suva, from 6th – 8th December 2022. The workshop was attended by approximately 30 participants including online attendees from Governments of Fiji, Port Authority of Solomon Islands and Papua New Guinea Ports Corporation and representatives of international organisations, universities, and transport and logistics industry companies, as well as by invited resource persons.

The workshop discussed the status and challenges to sustainable maritime connectivity and port development of the Pacific Island Countries. The participants reaffirmed that efficient maritime and port connectivity is key to harness the opportunity of strengthening interregional connectivity in the Pacific region. Participants also recognized the need for a comprehensive, long term and tailored maritime transport development strategy that considers multidimensional factors and the unique characteristics of Pacific Island Countries.

Fiji Ports presented on Fiji’s infrastructure, port operations, some of the high-level strategies developed and being implemented, as well as discussed some of the key challenges faced.



Suva Port Strategic Review Workshops held in Suva

The Government has requested the support of the Asian Development Bank (ADB) to conduct a strategic review of Fiji’s maritime sector generally, and Suva Port in particular, to identify a site for relocation of Suva Port. Consideration of the new port site is to include full or partial relocation of the activities currently performed at the existing port, growth in trade volumes and new commodities, consolidation of activities that are currently spread across several ports, and the potential to grow Fiji’s role as a hub for the wider South Pacific Islands community.

ADB has engaged Royal HaskoningDHV (RHDHV) to undertake the maritime sector review and to identify a preferred site for relocation of Suva Port.

In early November, the Ministry of Economy together with RHDHV organised workshops in Suva with the main aim to conduct consultations with various Government departments which are stakeholders in the selection of a preferred site for relocation of Suva Port.

The workshops provided RHDHV with the opportunity to gather specialist knowledge held by these departments that is relevant to the selection of a preferred port relocation site, as well as to gauge their thoughts more generally. Fiji Ports as the implementing agency par-



ticipated in all the workshops and provided insights and support to the facilitators.

FPCL participates in a panel discussion on Integrated Border Management

In November 2022, two representatives from FPCL attended a two days’ Regional Consultation on Practices and Lessons on Integrated Border Management. The main purpose of the consultation was to discuss lessons learned and good practices in border management during/post-pandemic periods and develop strategic partnerships to enhance regional border management agencies capabilities and collaborations.

The two days’ workshop was held on 29th and 30th November 2022 and was attended by Jope Serea (Risk and Compliance Analyst) and Reshmi Lata (Deputy Administration Manager - Lautoka).



Fiji Day Celebrations at FPCL

Fiji Ports celebrated the Fiji Day on Thursday 6th October 2022. As part of the celebration, the Social Committee had organised a department video competition with the theme – “Connecting Fiji’s Independences to FPCL’s vision”. The Finance team was the winner of the competition and they walked away with a winning prize of \$300, whilst the first runner up was the Human Capital Services team and received \$200, and the Assets and Facilities Management team won \$100 as second runner’s up.



Diwali Celebrated by all at FPCL

Diwali is a festival of new beginnings and the triumph of good over evil and light over darkness. This special occasion was held on Monday 24th October 2022 as many FPCL staff celebrated by dressing up in Diwali traditional attire and they also enjoyed the feast of delicious Diwali delights. Creative rangoli competition was held between the departments. First winner was awarded to Human Capital Services team, who won \$100 and Assets and Facilities Management team as runner’s up won \$50.

Sanjesh Kumar, Human Resource Business Analyst was recognised as the Best Dressed Male whilst Rabia Rafiq was recognised as the Best Dressed Female and were given shopping gift vouchers.

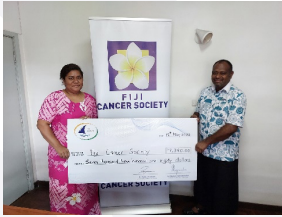




Pinktober Walk-a-thon

For the past two years, FPCL has been organising Pinktober Walk-a-thon and this year's was one of the successful ones. This year the staff were requested to raise funds as well. FPCL staff managed to raise a total of \$5,380 with FPCL topping up an additional \$2000 so a total of \$7,380 was donated to the Fiji Cancer Society.

Thank you to all the staff that participated, walked and those that sponsored.



FPCL Christmas Dinner at Holiday Inn

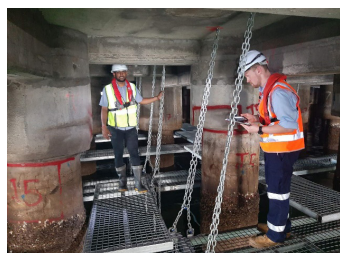
FPCL celebrated its Gala night, on 19th of November 2022, at the Holiday Inn. It is an annual event done to appreciate the staff for their tremendous work efforts and dedication throughout the year. The evening started with pre - cocktail drinks, followed by a team building game, which was to build a tower using straws, speeches from the Executive Management and FPCL's Social Committee. Entertainment was provided by Mata dance group, with a live band from Fiji Navy. The best dressed team was given to the Suva Local Wharf, with a price money of \$200 cash.



PROJECT UPDATES

Lautoka 1959, 2005 & Lautoka Local Wharf Rehabilitation Sub-Project.

In October 2022, Marine & Civil Maintenance (MCM) had fully mobilized to site at Queens Wharf Lautoka. MCM has successfully installed an access system underneath the deck to conduct the dilapidation survey. A dilapidation survey is typically carried out to assess the condition of the wharf structures before and after construction work. The access system installed by MCM would allow for the safe and efficient inspection of the structure beneath the deck.



Lautoka Foreshore Development Project.

The feasibility study contract for the Lautoka Foreshore Project was signed in December 2022 with GHD with works expected to commence from January 2023. The study aims to examine the current use of the area and evaluate potential development options to increase business value for FPCL. The study will consider factors such as the existing land use, zoning regulations, local market conditions, existing infrastructure, as well as the FPCL's strategic goals and available resources. From this, recommendations for the most viable development options, considering the economic, social, and environmental factors will be made. This report will be used by FPCL

to make strategic decisions on land usage for commercial, retail or tourism developments.



Muaiwalu 1 Tenants EFL Account Transfer Project.

In October 2022. FPCL and Kramer Ausenco signed the contract agreement for the consultancy services for the FPCL Tenants EFL account transfer which aims to address power leakage and theft issues at Muaiwalu 1 by assessing power usage and proposing a new power distribution solution and implement separate tenant metering. The project will improve the efficiency and accuracy of billing for the tenants in the Muaiwalu 1 area.

DONATIONS

Suva Special School – 27 October 2022

FPCL purchased and donated woodwork machinery to be used by the teachers and students at the Suva Special School.



1. Makita Hammer Drill
2. Makita Circular Saw
3. Makita MT-Series Angle Grinder

UNDP Contribution to FPCL

Personal Protection Equipment was handed over to Fiji Ports to be used at the Ports of Suva, Lautoka and Levuka for safety and wellbeing of frontline workers at these ports. This is an initiative under UNDP's Strengthening Border Control Capacity for the #COVID19 Crisis, with thanks to Japan - The Government of Japan.



LEARNING AND PROFESSIONAL DEVELOPMENT

OHS Training Module I & II

Occupational Health & Safety (OHS) deals with all aspects of health and safety in the workplace and has a strong focus on primary prevention of hazards with preventing accidents and harm to people from work-related activities as its main goal. The training was conducted for both Lautoka and Suva staff by the Human Capital Services accredited OHS Trainer, Anare Leweniqila (Human Capital Services Officer).



CORPORATE SOCIAL RESPONSIBILITY

Donation of Cleaning Equipment to Kalokolevu Village

The tree planting campaign at the Kalokolevu Biodiversity Park in collaboration with the Ministry of Forestry was undertaken on 9th April 2022 to commemorate the International Day of Forests. A total

of 100 native trees, 50 fruit trees and 1000 mangrove seedlings were planted on the day. The park is being maintained by the youths of Kalokolevu Village. A joint monitoring inspection was conducted on 6th September 2022 to check the progress of the seedlings planted which was a success.

FPCL had donated: 2 x brush cutters, 4 x fan rakes with handles, 4 x cleaning gloves, 2 x 20L gallon and 1 x trimmer line. The equipment is to assist the youths of Kalokolevu Village to maintain the biodiversity park following the contribution of plants donated by FPCL which is growing and well taken care of. The donation and visitation were led by the Social Committee on 16th of December 2022.



Feeding the Homeless

On the morning of 30th December 2022, FPCL's Social Committee together with a group of volunteering staffs fed a total number of 60 street dwellers in the Suva city vicinity. Areas covered were the whole city area, Toorak, Samabula, Nabua, Nasese and Vatuwaqa.



EMPLOYEES' CORNER

Staff Wellness

Wellness is primarily being in good physical and mental health. Because mental and physical health are so closely linked, problems in one area can impact the other. At the same time, improving physical health can also benefit mental health and other life domains, and vice versa. Wellness Wednesdays was re-introduced where all staff after work were encouraged to participate an hour of volleyball.



Farewells

"This is not goodbye, just farewell for now! Thank you for all you have done." As FPCL ventured towards the end of 2022, the company bid farewell to three of its staff: one of its support staff, Ashni Devi who served as Finance Support in the Finance Department. With that FPCL also said farewell to two of its contracted staff, Praneet Chand, who served as an Facilities Management Coordinator and Akosita Ranukai as a Cashier. FPCL wishes them a happy and productive years ahead.



MEET THE TEAM

Name: Asena Qalilawa



Position: Transport Assistant

Department / Unit: Assets Department

When did you join FPCL: January 2019

What you do like about working for FPCL and/or your job: The work environment and the employees make it all better! There is a lot to learn about the shipping industry and meeting new faces daily, especially to establish yourself as a worker and a representative of your company! It can be challenging at times but at the end of the day it is all worth it when we work together a team and have a common goal and that is to complete our daily Tasks!

Tell us a bit about yourself and your background: I have 3 big sisters and 2 younger brothers. My mum passed away in 2010 my inspiration but thankful to God for my father who is still here to always remind me of who I am and to always be humble and to always help others and work hard.

Hobbies: Listening to music, reading, collecting old and new watches and caps!

Favorite Quote or saying/Message: Live within your Means!

Name: Laisani



Position: Assistant OHS Officer

Department / Unit: OHS Unit

When did you join FPCL: I joined FPCL in 2016 as a Wharf Attendant. In 2019 I was moved to join the OHS Unit until to date.

What you do like about working for FPCL and/or your job: What I like about my job is that we get to tell and show people the importance of Safety.

Tell us a bit about yourself and your background: I grew up on a cane farm in Vanua Levu. Life was hard and very difficult. The school nearest to our home is like a 2 hour walk. My parents encouraged two things at home: church and school.

Difficulty was something I was taught not to see as an obstacle but an opportunity to do better. The teachings that I was taught at a young age have enabled me to survive and thrive in my current work environment. Working in a men's work is difficult. But it also provides the perfect platform to show case what I can do.

Health and Safety is not an option. It is a responsibility we bear daily. It is a responsibility we carry with pride as we know we are saving lives.

If Safety First, everything else will fall into place.

Hobbies: Socializing, Hiking, walking, cooking, and Gardening.

Favorite Quote or saying/Message: "Kindness is the language the deaf can hear, and the blind can see"

Mark Twain